



SHRI SHIVAJI EDUCATION SOCIETY, AMRAVATI'S

# SHRI SHIVAJI ARTS, COMMERCE AND SCIENCE COLLEGE, MOTALA

(NAAC Re-accredited with C Grade with CGPA 1.86)

ISO 9001: 2015 Certified College



3<sup>rd</sup> Cycle  
Assessment & Accreditation by NAAC

## CRITERION – VII INSTITUTIONAL VALUES AND BEST PRACTICES

QIM – 7.1.2

Geo-tagged photographs/videos of the facilities.

**INDEX**

<b>Sr. No.</b>	<b>Content</b>	<b>Page No.</b>
1	Declaration	1
2	Geotag Photo of Alternate Sources of Energy and Energy Conservation Measures	2
3	Geotag Photo of Management of the various types of degradable and nondegradable waste	6
4	Geotag Photo of Water conservation	9
5	Geotag Photo of Green Campus Initiatives	15
6	Geotag Photo of Disabled-friendly, barrier free environment	18



Shri Shivaji Education Society Amravati's

**SHRI SHIVAJI ARTS, COMMERCE & SCIENCE COLLEGE,  
MOTALA, DIST. BULDHANA (M.S.)**

(NAAC Re-accredited with C Grade with CGPA 1.86)



○ College Code : 317 ○ E-mail : ssacscm317@gmail.com ○ Website : www.sscmotala.ac.in ○ Cell No. : 9422945519 ○

**Shri. Harshvardhan P. Deshmukh**

President  
Shri. Shivaji Education Society, Amravati

**Dr. Gajanan N. Jadhao**

M.A., Ph.D., B.Ed.  
Principal

Outward No. SSACSCM/.....

Date: 20/05/2023

## Declaration

This is to certify that the information, reports, true copies of the supporting documents, numerical data, etc. furnished in this file have been verified by the IQAC and the Head of the Institution. The data is found correct.

Hence the certificate.

  
IQAC CO-ORDINATOR  
Shri Shivaji Arts, Commerce  
and Science College, Motala



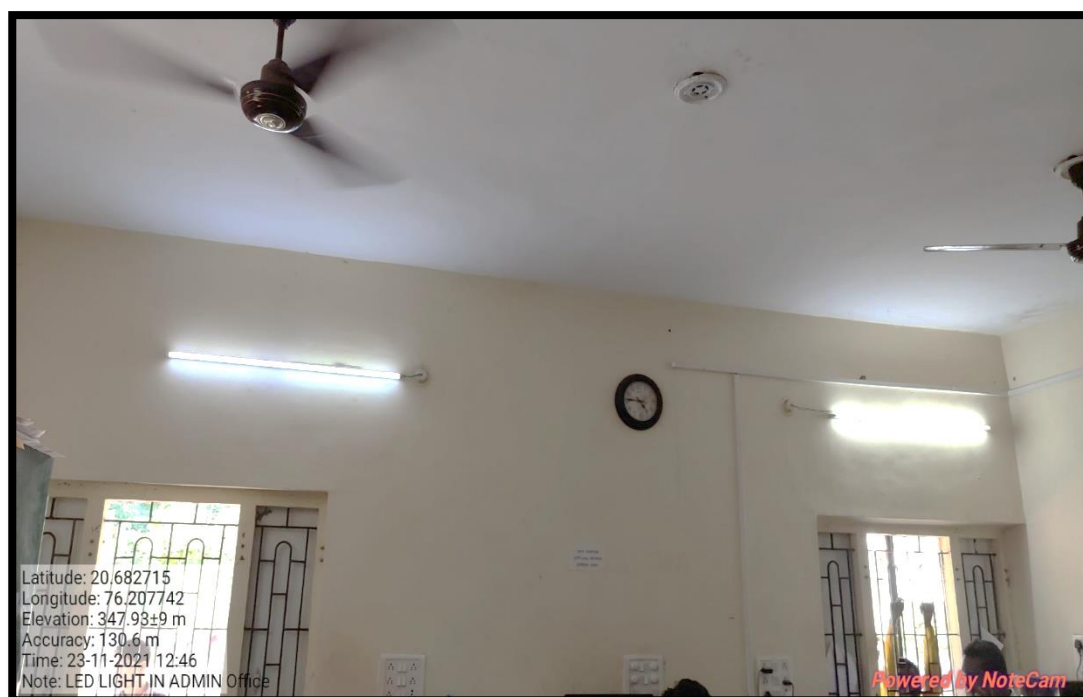
  
Principal  
Shri Shivaji Arts, Commerce  
& Science College Motala,  
Distt. Buldana

Geotagged photographs/ Videos of the Facilities.

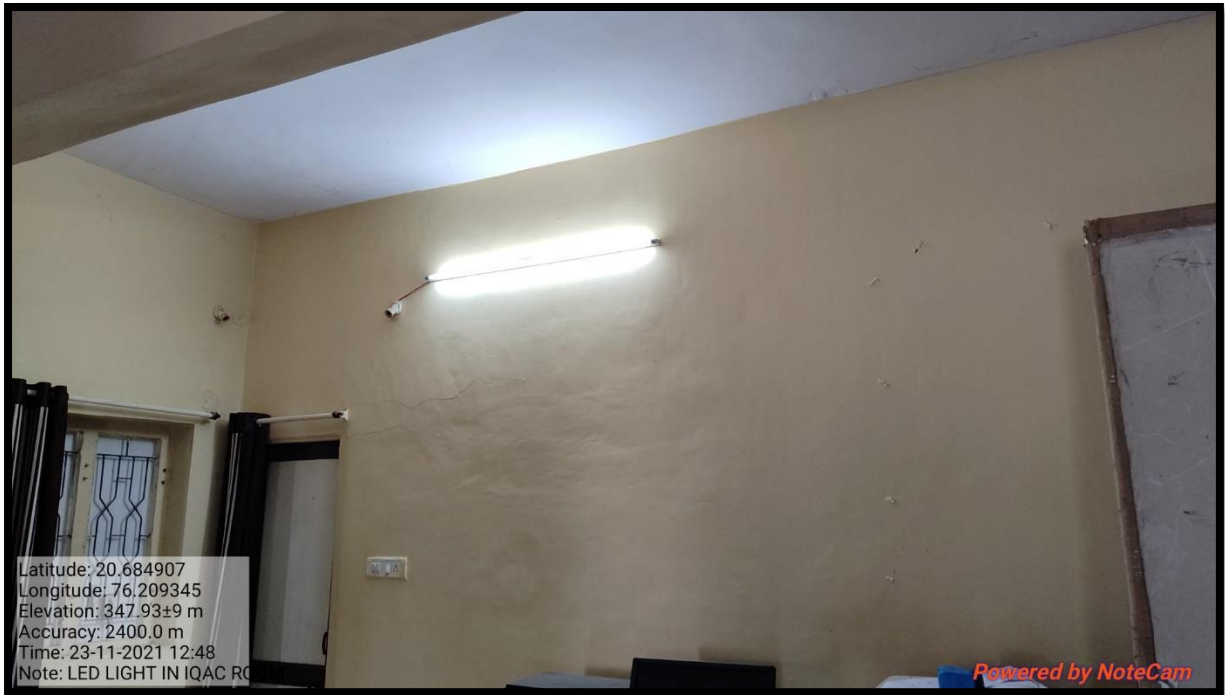
1) Geotag Photos of Alternate sources of energy and energy conservation measures



Use of LED Light in Chemistry Laboratory



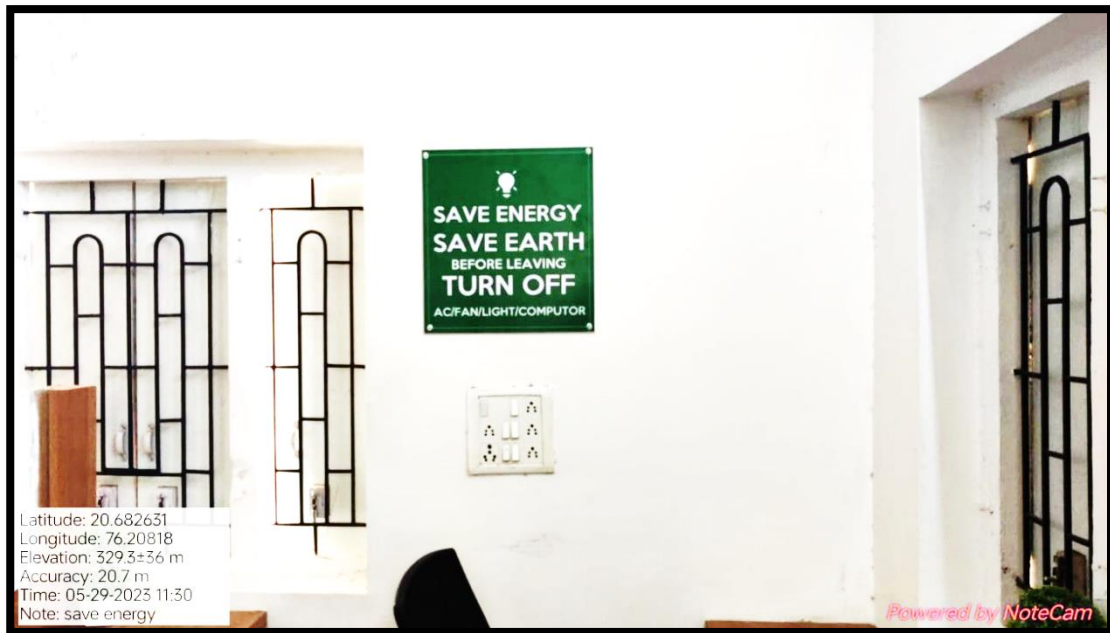
Use of LED Light in Administrative Office.



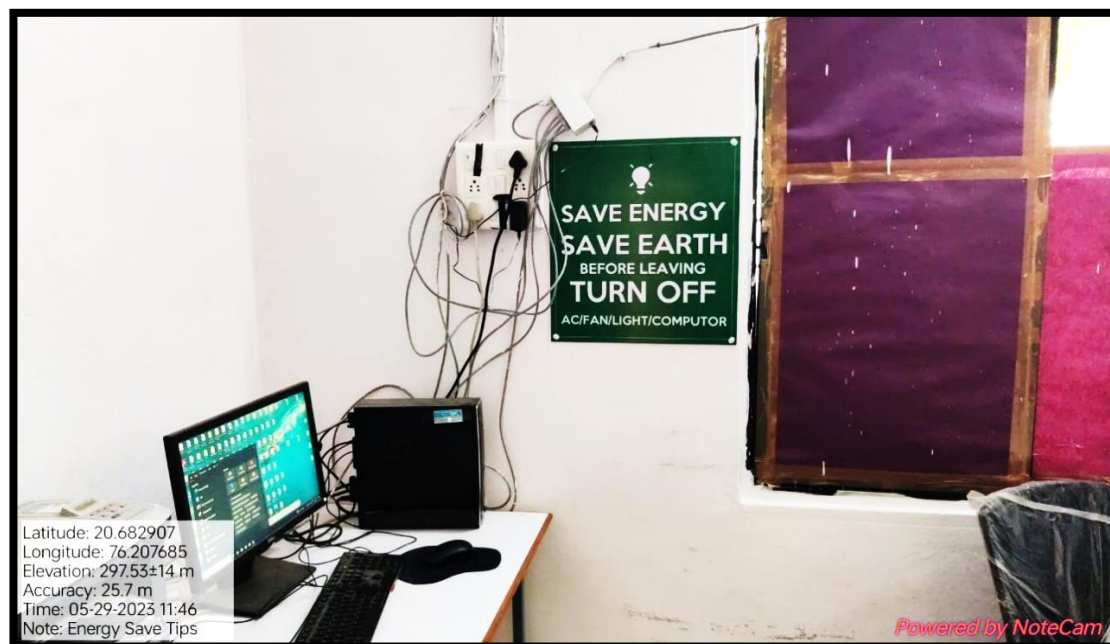
**Use of LED Light in IQAC Office.**



**Use of LED Light in the Classroom.**



**Save energy Tips in All Departments**



**Save Energy Tips in the Department of Physics**



**Solar Panel of 5 KW Installed at College**



**Solar Power System**

2) Geotag Photos of Management of the various types of degradable and nondegradable waste:



Solid Waste Management: Vermicompost Project for Organic Solid Waste



Solid waste recycling certificate of Nagar Panchayat, Motala





**Dustbins in College Campus for Collection of Waste Material**

**Liquid Waste Management:**



**Drainage Pit of Waste Water of Chemistry department**

3) Geotag Photos of Water Conservation:



Rain Water Harvesting in Farm Pond (In Monsoon)



Roof Top Water Harvesting Near Borewell.



**Roof Top Water Harvesting Near Borewell from Block C.**



**Roof Top Water Harvesting Near Borewell from Block B.**



**Water Distribution for Plants by Drip Irrigation System.**



**Water Distribution for Plants by Drip Irrigation System.**



**Water Distribution System at College**

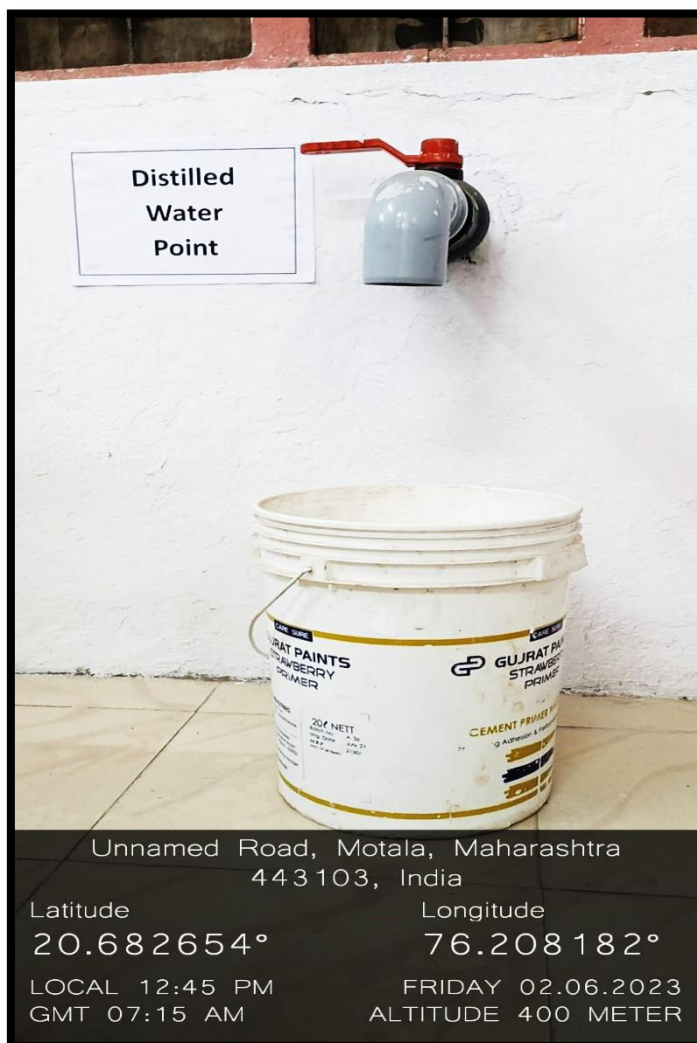


**Save Water Tips in Botany Lab.**



**Save Water Tips at Chemistry Lab.**

**Distilled water Point at Chemistry Department:**



**Distilled Water Point**



**4) Geotag Photos of Green Campus Initiatives:**



**Nursery of Indigenous Plants on College Campus**



**Nursery of Indigenous Plants on College Campus**



**Tree Plantation on College Campus**



**Tree Plantation on College Campus**



**Tree Plantation on College Campus**

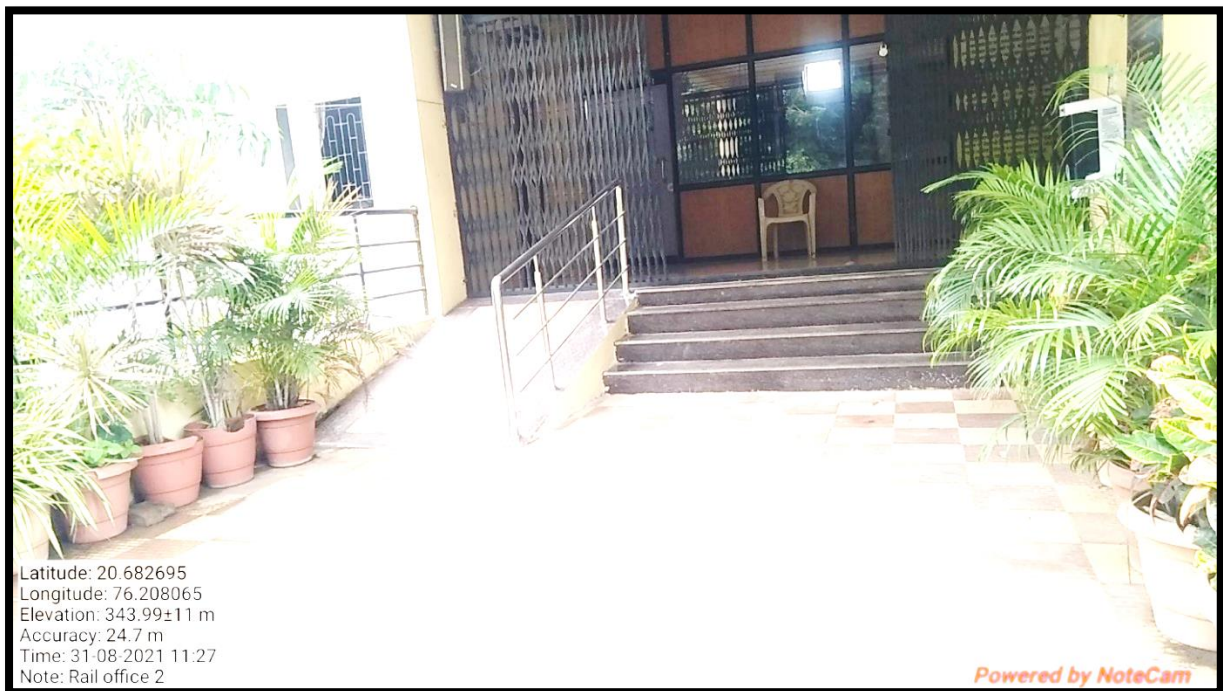


**Go Green Tips**

**5) Geotag Photos of Disabled-friendly, barrier-free environment:**



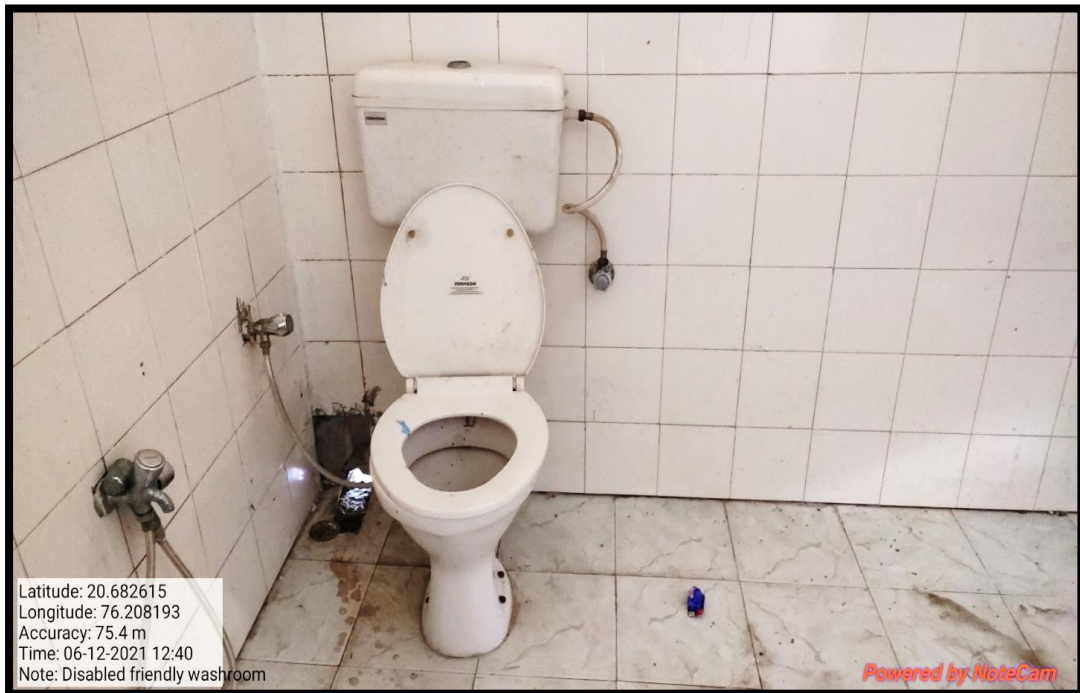
**Divyangjan- Friendly, Barrier-Free Environment: Ramp-1 For Ladies Hostel.**



**Divyangjan- Friendly, Barrier Free Environment: Ramp-2 For Block A.**



**Divyangjan- Friendly, Barrier-Free Environment: Ramp-3 For Block B.**



**Divyangjan- Friendly, Barrier Free Environment: Western Commode Facility.**



Our faculty Dr C. N. Rathod donated wheel chair for Divyangjan in memory of Late Shri Narayanrao P. Rathod.



**Wheelchair Facility**

  
IQAC CO-ORDINATOR  
Shri Shivaji Arts, Commerce  
and Science College, Motala



  
Principal  
Shri Shivaji Arts, Commerce  
& Science College,  
Motala, Dist-Buldana